

# Groovy Mushroom Towel Duo

Get into the groove with this set of vintage-inspired towels. Both designs feature a trio of colorful mushrooms surrounded by a bold, graphic border. Stitched on prefinished hand towels, the designs are quick to stitch and require no finishing.



## Groovy Mushroom Towel A

# Groovy Mushroom Towel Duo

Designs by Sharon Pope

**Skill level:** Confident Beginner

### Materials

- Two white ShowCase Huck Towels with 14-count Aida panel (#HF-6500-6750-EA) from DMC®/Charles Craft\*
- One skein each DMC® or Presencia® six-strand embroidery floss\*\*
- Size 24 tapestry needle

\*See "Where to Find It" on page 74.

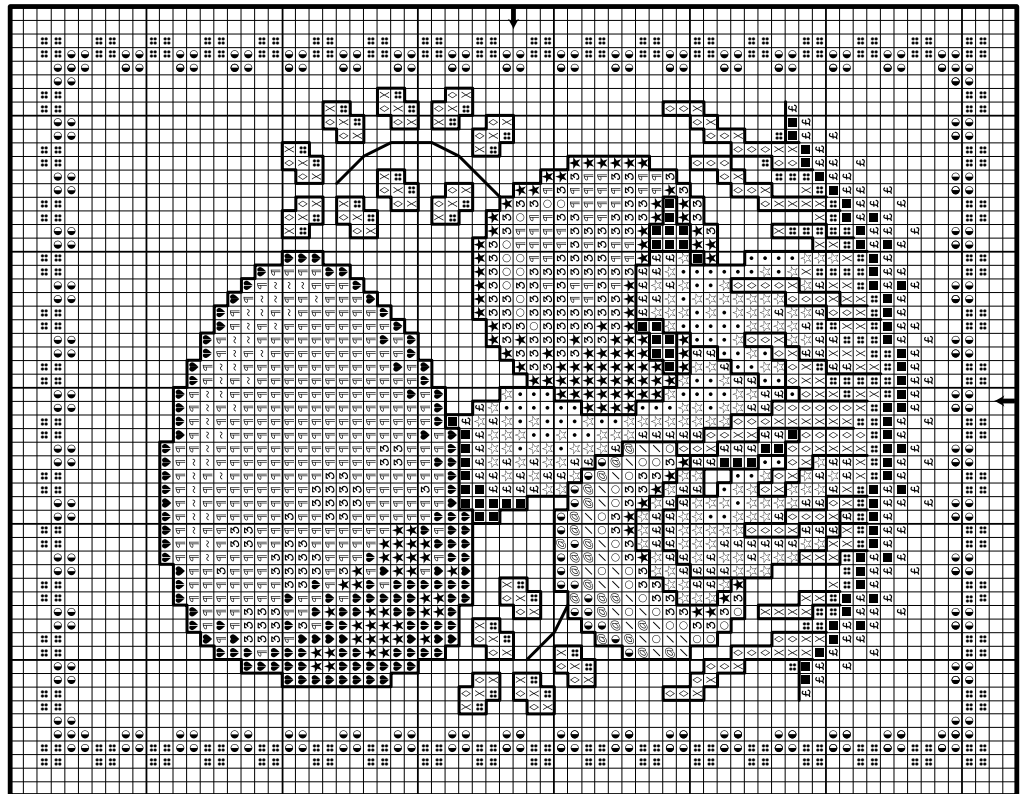
\*\*Refer to color code.

### DMC® Presencia®

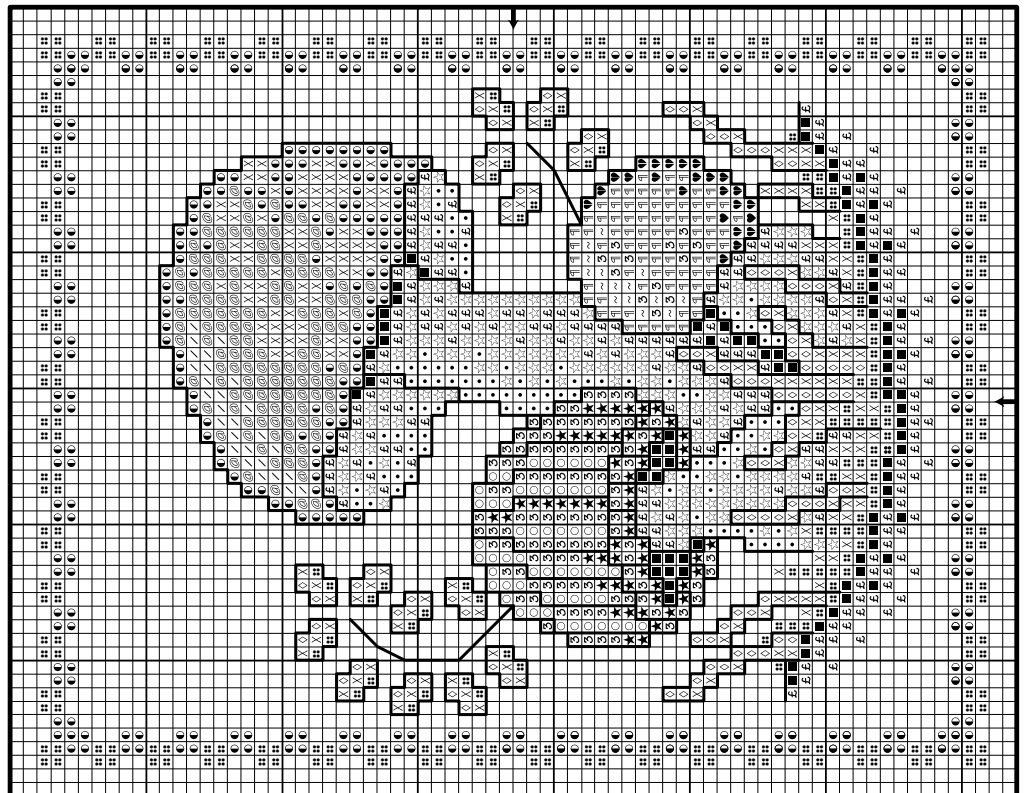
- |    |      |      |                        |
|----|------|------|------------------------|
| ○  | 3822 | 1137 | straw, lt.             |
| ∞  | 3821 | 1062 | straw                  |
| ★  | 3820 | 1040 | straw, dk.             |
| ∕  | 722  | 7471 | orange spice, lt.      |
| @  | 721  | 7567 | orange spice, med.     |
| ●  | 720  | 7574 | orange spice, dk.      |
| ~  | 351  | 1485 | coral                  |
| ¶  | 350  | 1344 | coral, med.            |
| ♥  | 349  | 1490 | coral, dk.             |
| ◇  | 472  | 4799 | avocado green, ul. lt. |
| ×  | 581  | 4812 | moss green             |
| ∴  | 580  | 4817 | moss green, dk.        |
| •  | 842  | 8145 | beige brown, vy. lt.   |
| ☆  | 841  | 8157 | beige brown, lt.       |
| £  | 840  | 8204 | beige brown, med.      |
| ■  | 839  | 8159 | beige brown, dk.       |
| bs | 310  | 0007 | black                  |

**Stitch count:** 70H x 54W each

**Design size:** 5" x 3 3/8" each



## Groovy Mushroom Towel B



**Instructions:** Center designs on Aida panels. Cross stitch over one square using two strands of floss.

Backstitch (bs) over two threads using two strands 310/0007.

Stitched by Cindy Herman