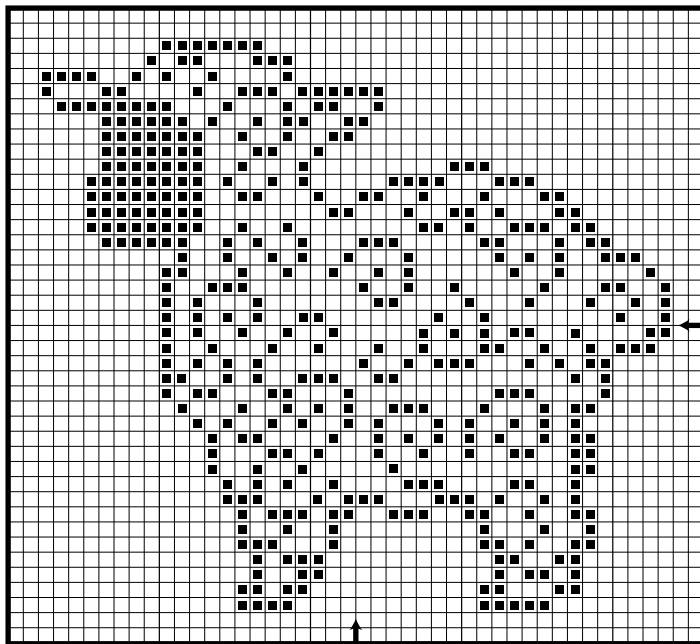




Swirly Sheep



**Just
CrossStitch**

An Annie's Publication

Swirly Sheep

Designed by Christy Schmitz

Materials

- 9" x 9" piece 28-count antique white linen from Wichelt Imports, Inc.
- One skein DMC® Color Variations six-strand embroidery floss*
- Size 24 tapestry needle

*Refer to color code.

DMC® Color Variations

- 127 Celebration

Stitch count: 38H x 42W

Design size: 2¾" x 3"

Instructions: Cross stitch over two threads, using two strands of floss.

Stitched by Ann Schmitz

Finishing materials and instructions:

One fat-quarter coordinating fabric
5" x 5" piece lightweight fusible interfacing
Polyester fiberfill

Ruler

Coordinating sewing thread

Sewing machine (optional)

Count out 20 threads from edge of stitched design and work a double running stitch over two threads, using two strands #127. Press stitched piece from reverse, straightening as much as possible. Count out 10 linen threads from border and remove linen thread on all sides; trim stitched piece on all sides along removed thread. Using a needle, carefully remove extra linen threads on the outside of border to create fringe.

Trim interfacing to fit within stitched border; following manufacturer's instructions, fuse interfacing to wrong side of stitched piece.

From coordinating fabric, cut two 9" x 8" pieces. Center stitched design on right side of one piece of coordinating fabric; stitch in place, using one strand #127 and working through stitched border. Press.

Place second piece of coordinating fabric atop pillow front, right sides together and aligning raw edges. Using a sewing machine, sew together, using a ½" seam allowance and leaving a 3" opening at bottom edge for turning. Clip corners to reduce bulk.

Turn pillow right-side out and press seams. Stuff pillow with fiberfill. Using a hand-sewing needle and coordinating thread, blind stitch 3" opening closed.

Finished by Christy Schmitz